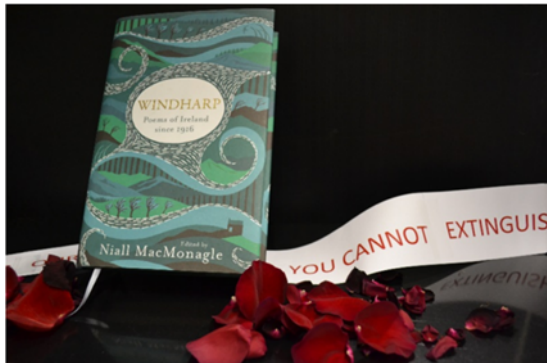


Easter 1916 Exhibitions in the Library

The Institute Library is hosting a bilingual exhibition entitled 'Athbheochan na Gaeilge agus Éirí Amach na Cásca' (The Irish Language Revival and the Easter Rising) from Monday 29th February to Saturday 5th March. The exhibition was developed by Conradh na Gaeilge (The Gaelic League) and consists of 13 story boards that tell the story of the Gaelic Revolution in Ireland and the revival of the Irish language since the Great Famine.

The exhibition also charts in detail the events leading up to the Easter Rising, exploring the stories of some of the key figures associated with 1916. The exhibition is courtesy of Kerry County Council and will go on display around the county as part of the 2016 Centenary Commemorations.

Running parallel to the Conradh na Gaeilge exhibition is the Institute Library's own 1916 installation. The transition from mystic poet to war strategist is captured in our *ARising* 1916 North Campus installation, centered around 1916 poetry compilations edited by Niall Mac Monagle (*Windharp*) and Maireád Ashe FitzGerald (*A Terrible Beauty*).



Both books are recent and acclaimed publications that we have added to our collection. Supporting this are artefacts from the 1966 fifty-year remembrance, comprising: commemorative 10 scilling coins, writings and a reprint of the original Na Fianna handbook. We are grateful to our colleague, John Daly, for loaning us such interesting material. The exhibition runs until April 8th.

Spring 2016

Volume 11, Issue 1



Inside this issue:

Library Survey	2
Analysis of the issues raised	3
Staff Book Club	3
Nexis UK—focus on a library database	3
Fiction collection relocated	3
Database trials	4
Libguides	4

Seachtain na Gaeilge 1-17 Márta 2016 — Taispeántas

Chun ceiliúradh a dhéanamh ar Seachtain na Gaeilge, tá taispeántas soghluaiste bunaithe ar cháipéisí atá i mbailiúcháin Chonradh na Gaeilge curtha i dtoll a chéile againn. Tugann an taispeántas seo léargas ar an ról a bhí ag gluaiseacht Athbheochan na Gaeilge i stair na hÉireann agus i saol cheannairí Éirí Amach na Cásca.

Beidh an taispeántas ar siúl i leabharlann an Institiúid Dé Luain 29 Feabhra go dtí Dé Sathairn 5 Márta. Tá fáilte mhór roimh achan duine bualadh isteach le h-amharc ar an taispeántas speisialta seo atá sa Ghaeilge agus sa Bhéarla.

Tá an taispeántas le caoinhead ó Chomhairle Chontae Chiarraí agus beidh sé á thaispeáint ar fud an chontae de bharr Céiliúradh Chuimhneacháin 2016.



Library Staff & Student Surveys 2015

The Library carried out its now bi-annual online survey in January-February 2015. A summary of the main findings is outlined below. There were a total of 163 replies from Students (77% based in the North Campus, 20% based in the South Campus and 3% for those who are based on both); and 14 replies from staff (50 % NC / 50% SC). In all there were 18 questions on the surveys. The responses to four of the questions are listed below.

In the summary below we have combined responses of Excellent or Good and taken this to reflect a positive view of the particular service. Average is listed separately; Poor and Very Poor are combined to indicate where a service could improve or where there is significant dissatisfaction with a service. Responses of N/A are not included although it is important to note that they are sometimes significant e.g. South Campus opening hours and SC as a place to study.

Library Survey responses 2015	Excellent/Good		Average		Poor/ Very Poor	
	Student	Staff	Student	Staff	Student	Staff
Please rate....						
Level of service provided by the library	83%	100%	14%	0%	1%	0%
Professionalism/helpfulness of library staff	85%	100%	12%	0%	1%	0%
Library staff success resolving information queries	81%	93%	11%	7%	1%	0%
North Campus opening hours	65%	100%	24%	0%	2%	0%
South Campus opening hours	16%	15%	25%	38%	16%	8%
The Library's communication with users	83%	79%	21%	3%	3%	0%
NC Library rated as a place in which to study / work	83%	69%	8%	0%	2%	0%
SC Library rated as a place in which to study / work	17%	0%	14%	8%	11%	15%
The Group Study room (NC) rated as a place in which to study / work	58%	31%	14%	0%	2%	0%
The Cube rated as a place in which to study / work	47%	25%	23%	8%	12%	0%

Summary of 'Negative experiences'; suggestions to improve the library service

- What are perceived as inadequate opening hours in the North & South Campus were the main issue for students. Specifically complaints regarding closing at 8pm. Earlier opening and weekend opening around exams requested.
- Complaints about noise levels in the Cube and the South Campus; also negative comments about noise levels in the North Campus library and a perceived lack of supervision and enforcement of the rules was raised.
- Request for more books to be available as e-books. / Requests for more PCs and sockets for laptops.
- Complaints about the construction of the Postgraduate Research offices area in the Cube.

In the survey we also received many reports of positive experiences regarding studying in the library and the support offered by library staff. The full survey results will be made available online via the library website. We are always interested in hearing your feedback on the library service and you can contact us directly at library@staff.ittralee.ie

Analysis of the issues raised and our response

Library opening hours It was agreed to provide extra staff for the library in Semester I and this has allowed us to increase our opening hours until 9pm from Monday—Thursday in the North Campus. Unfortunately at the same time we have had to temporarily reduce opening hours in the South Campus until all extra staff are in place. It should be noted that our opening hours per staff member are the highest in the IoT sector as we operate a dual campus library structure. As in previous years we have provided increased Saturday opening around exam times in the South Campus.

Noise levels provided increased monitoring of the South Campus reading room area from 9am-5pm for three weeks around exam times.

Analysis of the issues raised and our response (continued)

The Cube area has been redesigned to incorporate a group study area and the Postgraduate office space has been re-located to part of the Group Study Room on the first floor of the library.

PCs increased access to the 20 PCs in the training room for 6 weeks in Semester I and II. Increased the number of bookable PCs in the Cube.

Staff Book Club

For those staff members who like reading but find it quite a solitary task, why not link up with the IT Tralee Staff Book Club and discuss, share, disagree, recommend and importantly 'eat, drink and be merry' with their quarterly luncheon. Some great reads so far in addition to great fun have been enjoyed. Watch out for those email alerts or check-in with Fiona Mullins and Marguerita O Neill for further information.

Nexis UK - focus on a library database

Nexis UK is an excellent international business and news resource available through the library web page. It can be accessed directly through the **Resources** tab.

News research sources—current and deep archives

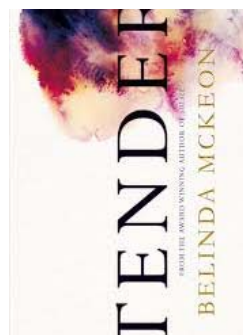
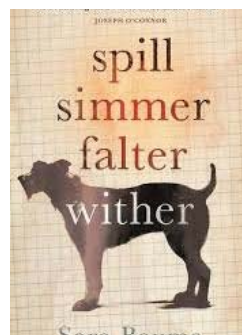
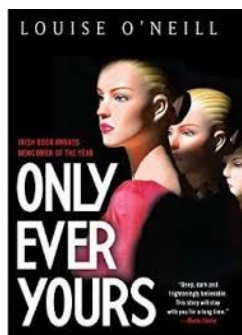
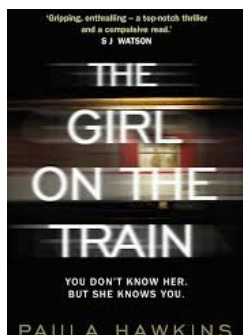
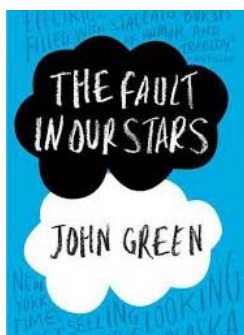
- More than 3,000 newspapers from around the globe
- 2,000+ magazines, journals and newsletters, such as *Newsweek*®, *Variety*®, *Library Journal*® and more
- Hard-to-find broadcast transcripts from ABC News®, CBS News®, NBC® News, CNN®, Fox News®, MSNBC® and more
- Wires services updated throughout the day, including The Associated Press®, Business Wire® and PR Newswire;
- Blogs and video blogs from *The New York Times*®, Medline® and more.

Business research sources—top credible sources

- Business news sources such as *Accountancy Age*, *Advertising Age*® and more
- Financial authorities such as Standard & Poor's® Corporate Descriptions, Hoover's® Company Reports, plus international company and stock reports, etc.
- SEC filings, including 10-Ks, 10-Qs, 8-Ks, 20-Fs and more

Fiction Collection to be Relocated

Following many suggestions for light and leisure reading we have added a spectrum of such, ranging from biographies, mysteries, narrative history, literary fiction and popular reading titles. A regularly broached question of whether we have any biographies.... or anything good to read???..... may soon be very easily answered by saying just 'try over there'. It has been agreed to move all our biographies and light reading as opposed to 'forced reading' down to our ground floor area in the North Campus in the very near future. For the moment many of our new arrivals are on display in both campuses in designated new book shelves and can be referenced on our New Book listing on our homepage . Below are a few of our newly acquired titles.

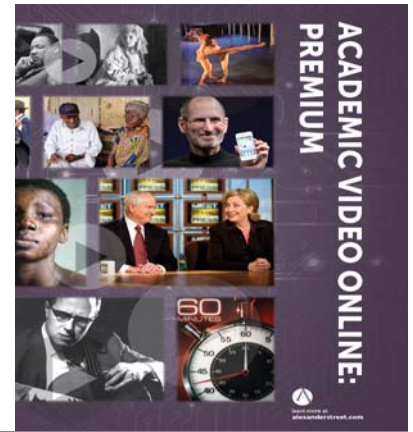


Current database trials

The library recently set up access to trials of three databases:

Alexander Street Press's **Academic Video Online: Premium** and **Music Online: Listening Plus** (trial ends Friday March 4th), as well as the STAT!Ref® database **New Primal Premier Human Anatomy Package** (trial runs until Monday, March 14th).

We would welcome your feedback on these database trials.



PRIMAL PICTURES



LibGuides - Library Subject Guides

The library staff have developed a range of online subject guides. These guides can be found on the library web page at this link: <http://libguides.ittralee.ie/>

The guides contain detailed information about the subject area, with recommended print and online materials available through the library, as well as links to useful websites, blogs and online videos.

If you would like to recommend a new guide in any subject area then please contact the relevant School Librarian with your suggestion.

Our School Librarians are:

Business, Computing & Humanities: Catherine Murray

Science, Technology, Engineering & Mathematics: Angela O'Connor Desmond

Health and Social Science: Donal O'Sullivan

The screenshot shows the homepage of the Institute of Technology Tralee LibGuides. At the top, there is a navigation bar with links for 'Library', 'LibGuides', 'Social Care', and 'Beginning your study'. The main heading is 'Social Care: Beginning your study'. Below this, there is a search bar with the text 'Enter Search Words' and a 'Search' button. A horizontal menu contains several categories: 'Beginning your study', 'Welcome to the library', 'How do I?...Videos', 'Books for your study', 'Online Books - Ebrary', and 'Finding an article ...Videos'. Under the 'Useful websites and blogs' section, there is a video player showing a man in a library setting with the title 'MAXOL Homes in on Simon Communit...'. To the right, under 'Featured Social Care Resources', there is a book cover for 'A New Agenda for Family Support' by Colm O'Doherty, with a brief description of the book's content.